

Tetracyclines

Experimental

Column: SVEA Core C18, 2.6 µm, 4.6 x 100 mm HPLC

Instrument: 1.0 mL/min

Flow rate: 40 °C

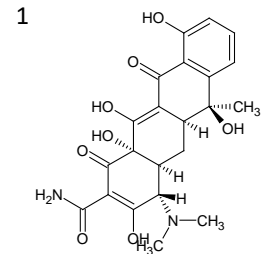
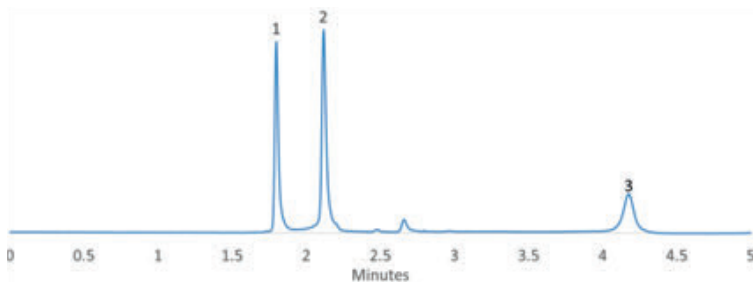
Column temperature: UV 350 nm

Detector:

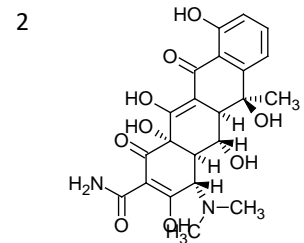
Sample:

1. Tetracycline
2. Oxytetracycline
3. Chlortetracycline

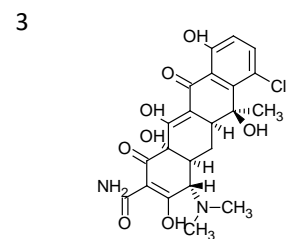
Mobile phase: Acetonitrile/0.1% phosphoric acid (20/80)



Tetracycline

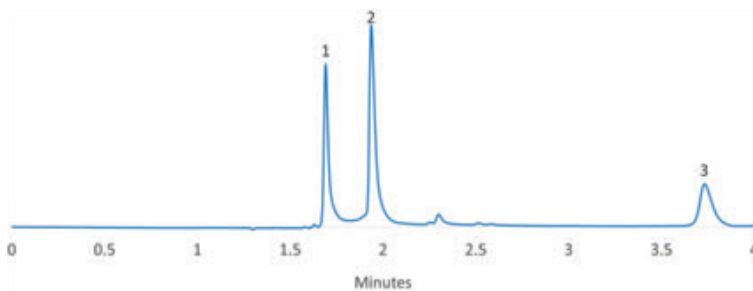


Oxytetracycline



Chlortetracycline

Mobile phase: Acetonitrile/0.1% formic acid (20/80)



Mobile phase: Acetonitrile/10mM oxalic acid (20/80)

