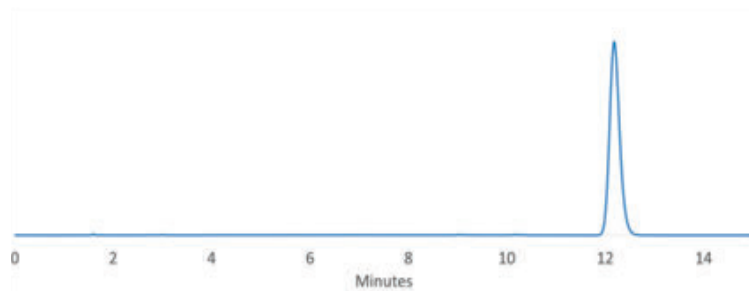


Simvastatin

Experimental

Column: SVEA C18 Gold, 5.0 μm 110 Å 4.6 x 250 mm
Instrument: HPLC
Mobile phase: 28mM Monobasic Na-phosphate buffer pH 4.50/acetonitrile (35/65)
Flow rate: 1.5 mL/min
Column temperature: 45 °C
Detector: UV 238 nm



Performance	Pharmacopoeia
$k' = 6.6$	$k' = \text{NLT } 3.0$
Efficiency (N) = 17246	Efficiency (N) = NLT 4500
Tailing = 0.82	Tailing = NMT 2.0