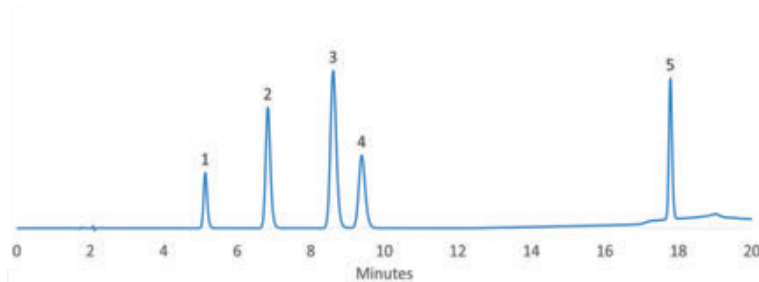


# Phenols

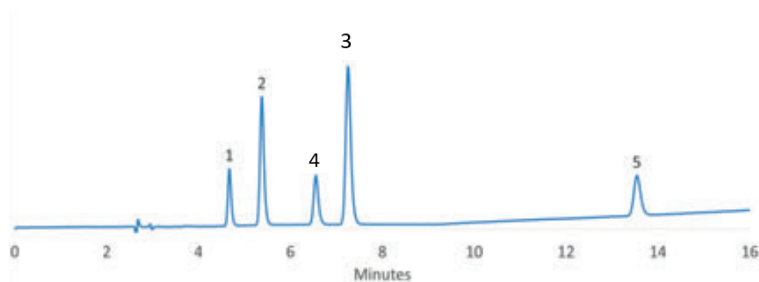
## Experimental

**Instrument:** HPLC  
**Flow rate:** 1.0 mL/min  
**Column temperature:** 30 °C  
**Detector:** UV 280 nm  
**Sample:**  
1. Phenol  
2. 4-Nitrophenol  
3. 2-Nitrophenol  
4. 2-Chlorophenol  
5. 2,4-Dichlorophenol

**Column:** SVEA C8, 5 µm 110 Å 4.6 x 150 mm  
**Mobile phase:** A: 1% Acetic acid in water, B: 1% Acetic acid in methanol.  
Gradient: 45-90% B in 20 minutes



**Column:** SVEA C18 Gold, 5 µm 110 Å 4.6 x 250 mm  
**Mobile phase:** A: 1% Acetic acid in water, B: 1% Acetic acid in methanol.  
Gradient: 60-90% B in 22 minutes



The less lipophilic SVEA C8 can exhibit slight different selectivity as compared to SVEA C18 Gold, shown by the reversed retention order of the phenolic compounds 3 and 4.