

H2 Blockers

Experimental

Column: SVEA Core C18, 2.6 μ m, 4.6 x 100 mm

Instrument: HPLC

Flow rate: 1.0 mL/min

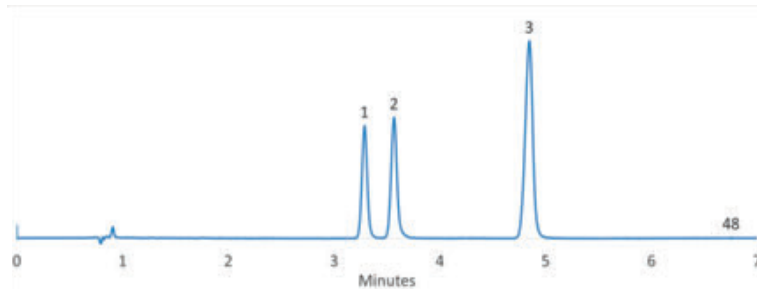
Column temperature: Ambient

Detector: UV 230 nm

Sample:

1. Famotidine
2. Cimetidine
3. Ranitidine

Mobilephase: Acetonitrile/10mM ammonium acetate pH 6.8 (10/90)



Mobilephase: Acetonitrile/25mM phosphate buffer pH 7.0 (10/90)

