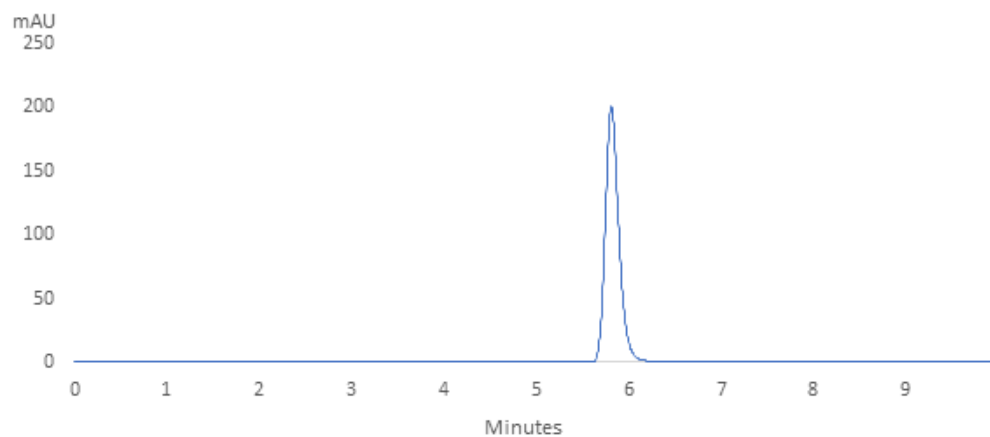


Febuxostat

Experimental

Column:	SVEA C18 Gold, 5 µm 110 Å 4.0 x 250 mm
Instrument:	HPLC
Mobile phase:	0.01 M Phosphate Buffer (pH 2.5): Methanol = (20/80)
Flow rate:	1.0 mL/min
Injection volume:	10 µL
Column temperature:	25 °C
Detector:	UV 316 nm
Sample:	100 ppm Febuxostat in 0.01 M Phosphate Buffer (pH 2.5): Methanol = (20/80)



Performance

Retention time = 5.8

USP Tailing = 1.25

Theoretical plate number = 30240

Area under curve = 183.49660