

Tetracyclines

Detection of tetracyclines in an extract of chicken meat

Experimental

Column: SVEA Core C18, 2.6 μm , 4.6 x 100 mm

Instrument: HPLC

Mobile phase: A: Methanol; B: 0.1% Formic acid in water.

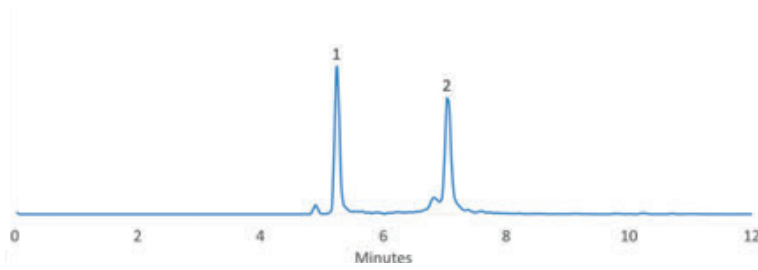
Gradient: 0-10% A in 2 min; 10-90% A in 4 min; 90% A for 3 min; 90-10% A in 2 min

Flow rate: 0.35 mL/min

Column temperature: 25°C

Detector: MS/MS

Sample:
1. Terramycin
2. Doxycycline



Data kindly provided by: Animal, Plant and Food Inspection Center-APFIC, Jiangsu Entry-Exit Inspection and Quarantine Bureau of People's Republic of China