

# Sulfonamides

## Detection of sulfonamides in an extract of chicken meat

### Experimental

**Column:** SVEA Core C18, 2.6  $\mu\text{m}$ , 4.6 x 100 mm

**Instrument:** HPLC

**Mobile phase:** A: Methanol; B: 0.1% Formic acid in water.

Gradient: 0-10% A in 2 min; 10-90% A in 4 min; 90% A for 3 min; 90-10% A in 2 min

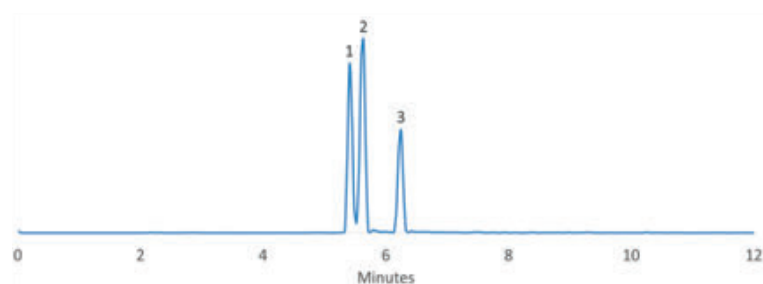
**Flow rate:** 0.35 mL/min

**Column temperature:** 25°C

**Detector:** MS/MS

**Sample:**

1. Sulfamethoxypyridazine
2. Sulfameter
3. Sulfamonomethoxine



Data kindly provided by: Animal, Plant and Food Inspection Center-APFIC, Jiangsu Entry-Exit Inspection and Quarantine Bureau of People's Republic of China