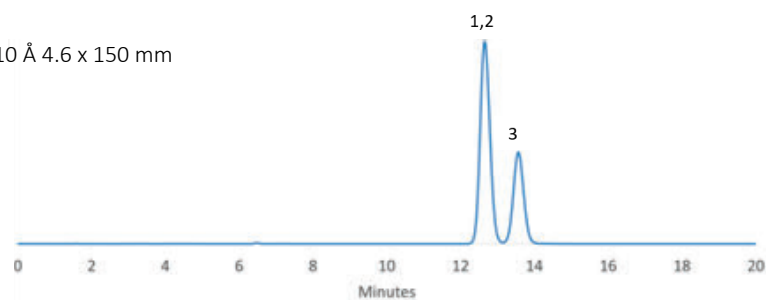


Cresols

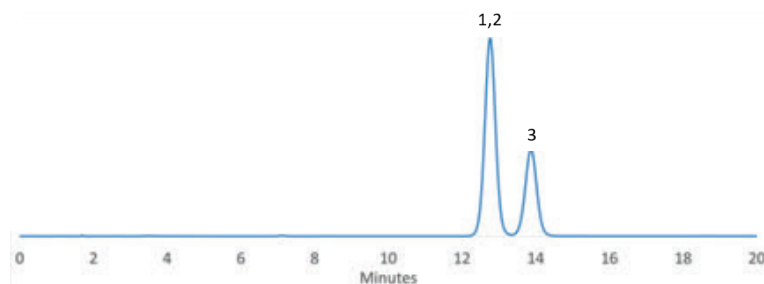
Experimental

Instrument: HPLC
Mobile phase: Methanol/water (40/60)
Flow rate: 1.0 mL/min
Detector: UV 210 nm
Sample: 1 m-cresol
2 p-cresol
3 o-cresol

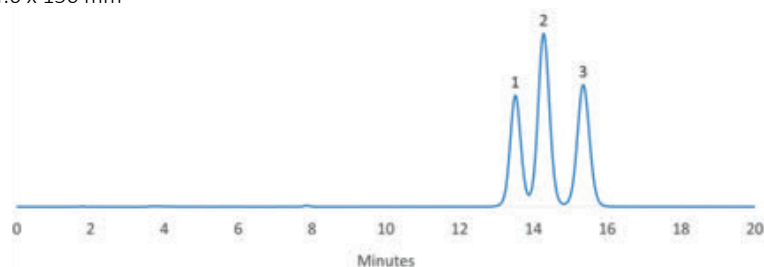
Column: SVEA C18 Gold, 5 μm 110 \AA 4.6 x 150 mm
Column temperature: 20 $^{\circ}\text{C}$



Column: SVEA PhHex, 5 μm 110 \AA 4.6 x 150 mm
Column temperature: 20 $^{\circ}\text{C}$



Column: SVEA PFP, 5 μm 110 \AA 4.6 x 150 mm
Column temperature: 25 $^{\circ}\text{C}$



Due to its different selectivity SVEA PFP is able to separate all three regioisomers.

