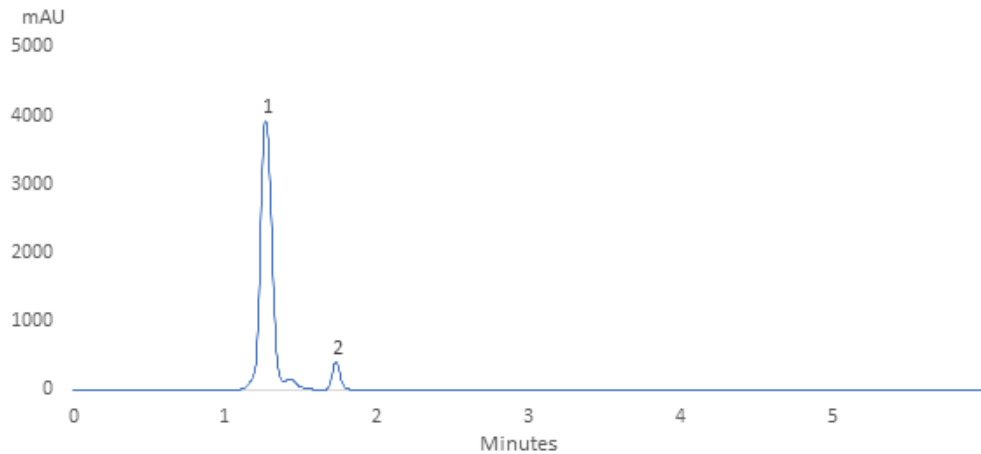


Ceftriaxone and Sulbactam

Experimental

Column:	SVEA C18 Gold, 5.0 µm 110 Å 4.6 x 150 mm
Instrument:	HPLC
Mobilephase:	0.05 M Phosphate buffer (pH 3.5):Acetonitrile =(35: 65)
Flow rate:	1.0 mL/min
Injection volume:	20 µL
Column temperature:	25°C
Detector:	UV 215 nm
Sample:	200 ppm Ceftriaxone + Sulbactam in Water: Methanol (60:40)



Ceftriaxone Performance

Retention time = 1.3

USP Tailing = 1.09

Theoretical plate number = 9047

Area under curve = 20686.475

Sulbactam Performance

Retention time = 1.7

USP Tailing = 1.14

Theoretical plate number = 33907

Area under curve = 1577.709

