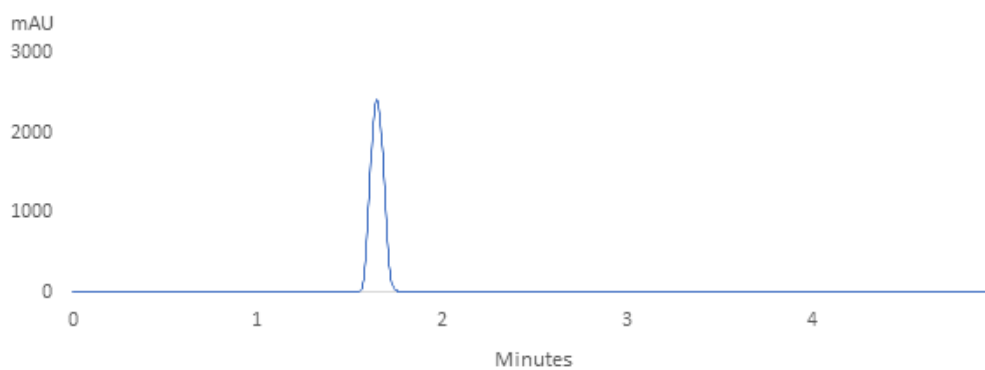


# Benzyl alcohol

## Experimental

<b>Column:</b>	SVEA C18 Gold, 5 µm 110 Å 4.6 x 150 mm
<b>Instrument:</b>	HPLC
<b>Mobile phase:</b>	Acetonitrile : Methanol = (60:40)
<b>Flow rate:</b>	1.0 mL/min
<b>Injection volume:</b>	10µl
<b>Column temperature:</b>	25°C
<b>Detector:</b>	UV 254 nm
<b>Sample:</b>	100 µL Benzyl alcohol in 900 µL Methanol



### Performance

Retention time = 1.6

USP Tailing = 1.08

Theoretical plate number = 12660

Area under curve = 12878.357

